

LLA Scales and Arpeggios

Wind Symphony: Play all scales and arpeggios memorized as written. Choose G \flat or F \sharp .
Concert Winds: Play scales and arpeggios from C up to 4 sharps and 4 flats memorized, two octaves where possible. Play chromatic scale at your full range.

C

F

B \flat

E \flat

Flute

Ab

Db

Gb (enharmonic with F#)

F# (enharmonic with Gb)

B play low octave if you have a B foot joint

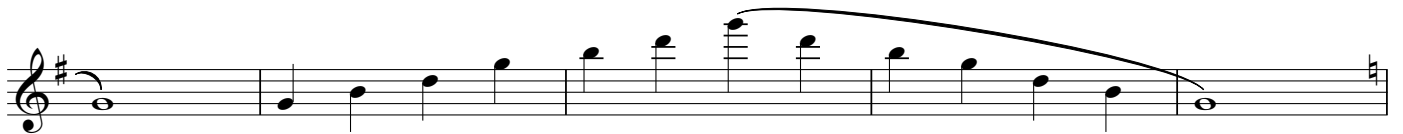
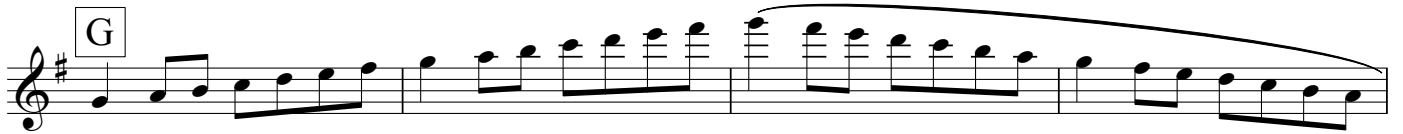
E

A

D



G



Chromatic



Oboe

LLA Scales and Arpeggios

Wind Symphony: Play all scales and arpeggios memorized as written. Play G \flat or F \sharp .
Concert Winds: Play scales and arpeggios from C up to 4 sharps and 4 flats memorized, two octaves.

C

Musical notation for the C major scale and arpeggio. The scale is written on a treble clef staff in 4/4 time, starting on middle C. The arpeggio is written on a bass clef staff, starting on middle C and ending on the C below. Both are marked with a slur and a fermata.

F

Musical notation for the F major scale and arpeggio. The scale is written on a treble clef staff in 4/4 time, starting on F. The arpeggio is written on a bass clef staff, starting on F and ending on the F below. Both are marked with a slur and a fermata.

B \flat

Musical notation for the B-flat major scale and arpeggio. The scale is written on a treble clef staff in 4/4 time, starting on B-flat. The arpeggio is written on a bass clef staff, starting on B-flat and ending on the B-flat below. Both are marked with a slur and a fermata.

E \flat

Musical notation for the E-flat major scale and arpeggio. The scale is written on a treble clef staff in 4/4 time, starting on E-flat. The arpeggio is written on a bass clef staff, starting on E-flat and ending on the E-flat below. Both are marked with a slur and a fermata.

Ab

Db

Gb (enharmonic with F#)

F# (enharmonic with Gb)

B

E

A

D

G

Chromatic

Bassoon

LLA Scales and Arpeggios

Wind Symphony: Play all scales and arpeggios memorized as written. Play G \flat or F \sharp .
Concert Winds: Play scales and arpeggios from C up to 4 sharps and 4 flats memorized, two octaves.

C

Scale and arpeggio for C major.

F

Scale and arpeggio for F major.

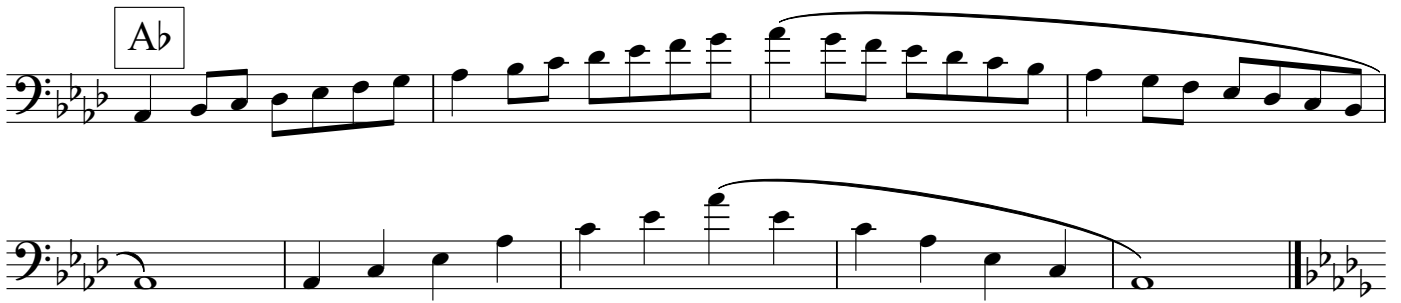
B \flat

Scale and arpeggio for B \flat major.

E \flat

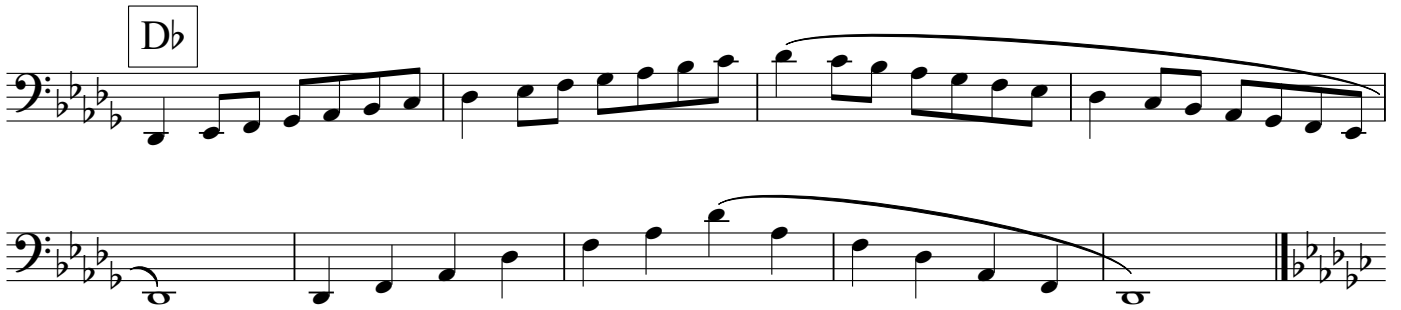
Scale and arpeggio for E \flat major.

Ab



Two staves of musical notation for the Ab scale. The top staff shows the ascending scale: Ab, Bb, Cb, Db, Eb, Fb, Gb, Ab. The bottom staff shows the descending scale: Ab, Bb, Cb, Db, Eb, Fb, Gb, Ab. Both scales are written in bass clef with a key signature of three flats (Ab major/Cb minor).

Db



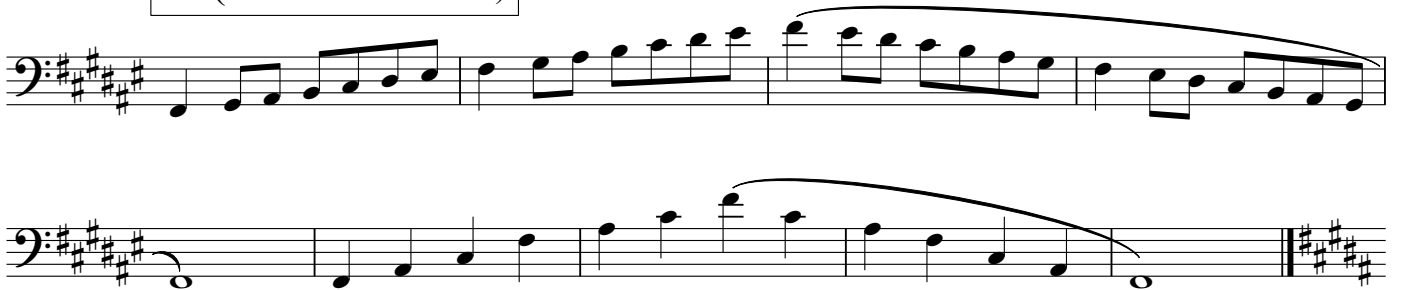
Two staves of musical notation for the Db scale. The top staff shows the ascending scale: Db, Eb, Fb, Gb, Ab, Bb, Cb, Db. The bottom staff shows the descending scale: Db, Eb, Fb, Gb, Ab, Bb, Cb, Db. Both scales are written in bass clef with a key signature of four flats (Db major/Fb minor).

Gb (enharmonic with F#)



Two staves of musical notation for the Gb scale. The top staff shows the ascending scale: Gb, Ab, Bb, Cb, Db, Eb, Fb, Gb. The bottom staff shows the descending scale: Gb, Ab, Bb, Cb, Db, Eb, Fb, Gb. Both scales are written in bass clef with a key signature of three flats (Gb major/Cb minor).

F# (enharmonic with Gb)



Two staves of musical notation for the F# scale. The top staff shows the ascending scale: F#, G#, A#, B#, C#, D#, E#, F#. The bottom staff shows the descending scale: F#, G#, A#, B#, C#, D#, E#, F#. Both scales are written in bass clef with a key signature of three sharps (F# major/C# minor).

B



Two staves of musical notation for the B scale. The top staff shows the ascending scale: B, C, D, E, F, G, A, B. The bottom staff shows the descending scale: B, C, D, E, F, G, A, B. Both scales are written in bass clef with a key signature of two sharps (B major/F# minor).

E

First staff of the E exercise, showing a melodic line in bass clef with a key signature of three sharps (F#, C#, G#).

Second staff of the E exercise, continuing the melodic line from the first staff.

A

First staff of the A exercise, showing a melodic line in bass clef with a key signature of three sharps (F#, C#, G#).

Second staff of the A exercise, continuing the melodic line from the first staff.

D

First staff of the D exercise, showing a melodic line in bass clef with a key signature of two sharps (F#, C#).

Second staff of the D exercise, continuing the melodic line from the first staff.

G

First staff of the G exercise, showing a melodic line in bass clef with a key signature of one sharp (F#).

Second staff of the G exercise, continuing the melodic line from the first staff.

Chromatic

First staff of the Chromatic exercise, showing a chromatic scale in bass clef with a key signature of one sharp (F#).

Second staff of the Chromatic exercise, continuing the chromatic scale from the first staff.

Third staff of the Chromatic exercise, continuing the chromatic scale from the second staff.

Clarinet

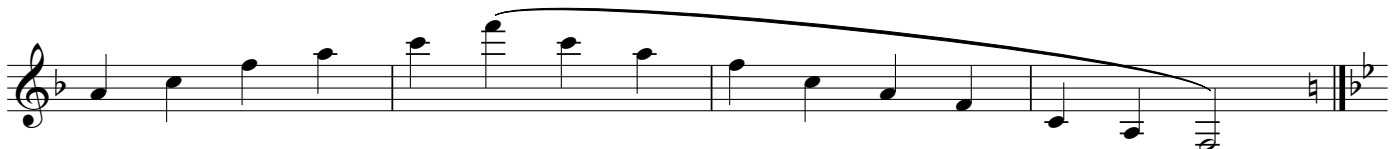
LLA Scales and Arpeggios

Wind Symphony: Play all scales and arpeggios memorized as written. Play G \flat or F \sharp
Concert Winds: Play scales and arpeggios from C up to 4 sharps and 4 flats memorized, two octaves.

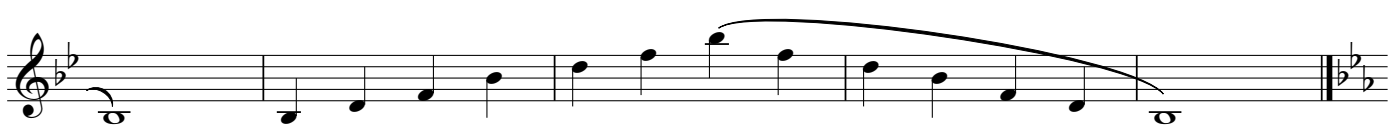
C Concert B \flat



F Concert E \flat



B \flat Concert A \flat



E \flat | **Concert D \flat**

Two staves of musical notation in E-flat major (three flats). The first staff contains a melodic line with a long, sweeping slur over the final six notes. The second staff contains a bass line with a long, sweeping slur over the final six notes. The piece concludes with a double bar line and a key signature change to D-flat major.

A \flat | **Concert G \flat**

Two staves of musical notation in A-flat major (four flats). The first staff contains a melodic line with a long, sweeping slur over the final six notes. The second staff contains a bass line with a long, sweeping slur over the final six notes. The piece concludes with a double bar line and a key signature change to G-flat major.

D \flat | **Concert C \flat**

Two staves of musical notation in D-flat major (five flats). The first staff contains a melodic line with a long, sweeping slur over the final six notes. The second staff contains a bass line with a long, sweeping slur over the final six notes. The piece concludes with a double bar line and a key signature change to C-flat major.

G \flat (enharmonic with F \sharp) | **Concert E**

Three staves of musical notation in E major (one sharp). The first staff contains a melodic line with a long, sweeping slur over the final six notes. The second staff contains a melodic line with a long, sweeping slur over the final six notes. The third staff contains a bass line with a long, sweeping slur over the final six notes. The piece concludes with a double bar line and a key signature change to E major.

F# (enharmonic with Gb)

Concert E

Three staves of musical notation for Concert E. The first staff contains measures 1-3, featuring a melodic line with eighth and sixteenth notes. The second and third staves show a long, sweeping melodic line with a slur, ending with a double bar line and a key signature change to three sharps (F#, C#, G#).

B Concert A

Two staves of musical notation for Concert A. The first staff contains measures 1-2, showing a melodic line with eighth notes. The second staff continues the melodic line with a slur, ending with a double bar line and a key signature change to three sharps (F#, C#, G#).

E Concert D

Three staves of musical notation for Concert D. The first staff contains measures 1-3, featuring a melodic line with eighth and sixteenth notes. The second and third staves show a long, sweeping melodic line with a slur, ending with a double bar line and a key signature change to three sharps (F#, C#, G#).

A Concert G

Two staves of musical notation for 'A Concert G'. The first staff is a treble clef with a key signature of three sharps (F#, C#, G#) and a melody of eighth notes. The second staff is a bass clef with a key signature of three sharps, featuring a single note on the first line (G) and a single note on the first space (C) with a long, sweeping slur over the interval.

D Concert C

Two staves of musical notation for 'D Concert C'. The first staff is a treble clef with a key signature of two sharps (F#, C#) and a melody of eighth notes. The second staff is a bass clef with a key signature of two sharps, featuring a single note on the first line (C) and a single note on the first space (F) with a long, sweeping slur over the interval.

G Concert F

Two staves of musical notation for 'G Concert F'. The first staff is a treble clef with a key signature of one sharp (F#) and a melody of eighth notes. The second staff is a bass clef with a key signature of one sharp, featuring a single note on the first line (F) and a single note on the first space (C) with a long, sweeping slur over the interval.

Chromatic

Two staves of musical notation for 'Chromatic'. The first staff is a treble clef with a key signature of one sharp (F#) and a chromatic scale of eighth notes. The second staff is a bass clef with a key signature of one flat (F) and a chromatic scale of eighth notes.

Alto/Bari Saxophone

LLA Scales and Arpeggios

Wind Symphony: Play all scales and arpeggios memorized as written. Play G \flat or F \sharp .

Concert Winds: Play scales and arpeggios from C up to 4 sharps and 4 flats memorized, two octaves.

C Concert E \flat

Two staves of music for the C major scale and arpeggio in Concert Eb. The first staff shows the scale ascending and then descending in 4/4 time. The second staff shows the arpeggio starting on a whole note, followed by eighth notes, and ending with a whole note.

F Concert A \flat

Two staves of music for the F major scale and arpeggio in Concert Ab. The first staff shows the scale ascending and then descending in 4/4 time. The second staff shows the arpeggio starting on a whole note, followed by eighth notes, and ending with a whole note.

B \flat Concert D \flat

Two staves of music for the B \flat major scale and arpeggio in Concert D \flat . The first staff shows the scale ascending and then descending in 4/4 time. The second staff shows the arpeggio starting on a whole note, followed by eighth notes, and ending with a whole note.

E \flat Concert G \flat

Two staves of music for the E \flat major scale and arpeggio in Concert G \flat . The first staff shows the scale ascending and then descending in 4/4 time. The second staff shows the arpeggio starting on a whole note, followed by eighth notes, and ending with a whole note.

Ab Concert C \flat /B



Db Concert E



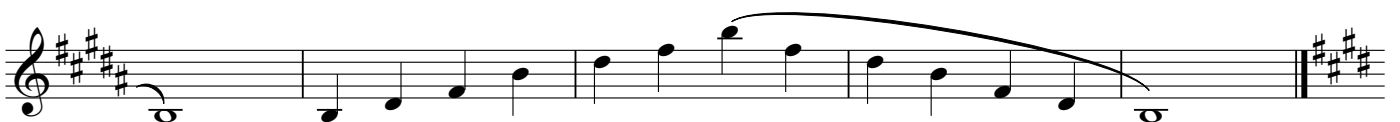
G \flat (enharmonic with F \sharp) Concert A



F \sharp (enharmonic with G \flat) Concert A



B Concert D



E Concert G

Two staves of musical notation for 'E Concert G'. The first staff contains a melodic line with a long slur over the final four measures. The second staff continues the melody, ending with a double bar line and a key signature change to three sharps.

A Concert C

One staff of musical notation for 'A Concert C', featuring a melodic line with a long slur over the final four measures, ending with a double bar line and a key signature change to three sharps.

D Concert F

Two staves of musical notation for 'D Concert F'. The first staff contains a melodic line with a long slur over the final four measures. The second staff continues the melody, ending with a double bar line and a key signature change to two sharps.

G Concert Bb

One staff of musical notation for 'G Concert Bb', featuring a melodic line with a long slur over the final four measures, ending with a double bar line and a key signature change to one flat.

Chromatic

Two staves of musical notation for 'Chromatic'. The first staff shows a chromatic scale ascending from C4 to G5. The second staff shows a chromatic scale descending from G5 to C4.

Tenor Saxophone

LLA Scales and Arpeggios

Wind Symphony: Play all scales and arpeggios memorized as written. Play G \flat or F \sharp .
Concert Winds: Play scales and arpeggios from C up to 4 sharps and 4 flats memorized, two octaves.

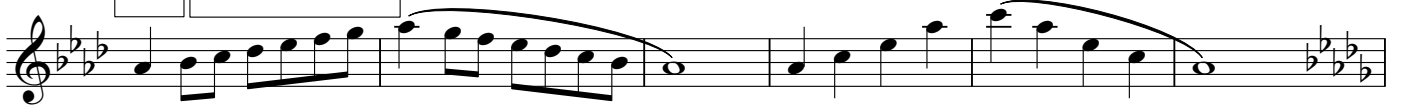
C Concert B \flat

F Concert E \flat

B \flat Concert A \flat

E \flat Concert D \flat

$A\flat$ Concert $G\flat$



$D\flat$ Concert $C\flat$



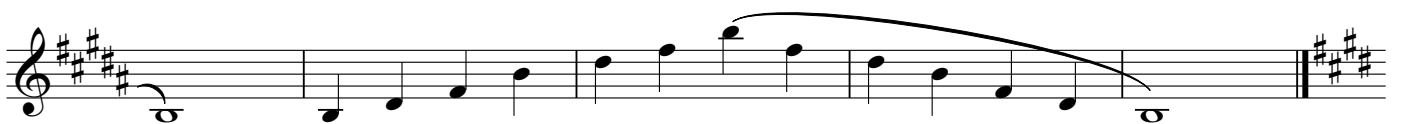
$G\flat$ (enharmonic with $F\sharp$) Concert E



$F\sharp$ (enharmonic with $G\flat$) Concert E



B Concert A



E Concert D

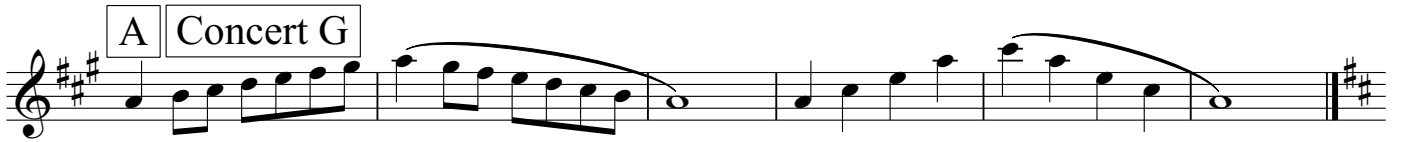


A musical staff in treble clef with a key signature of three sharps (F#, C#, G#). The melody consists of eighth and quarter notes, starting on G4 and ending on G4. A long slur covers the final two measures.



A musical staff in treble clef with a key signature of three sharps. The melody continues from the first line, ending on a whole note G4. A long slur covers the final two measures.

A Concert G

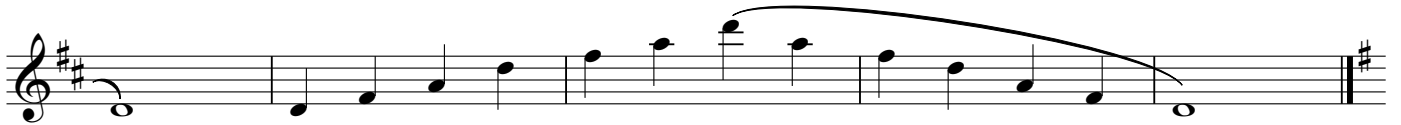


A musical staff in treble clef with a key signature of three sharps. The melody consists of eighth and quarter notes, starting on G4 and ending on G4. A long slur covers the final two measures.

D Concert C

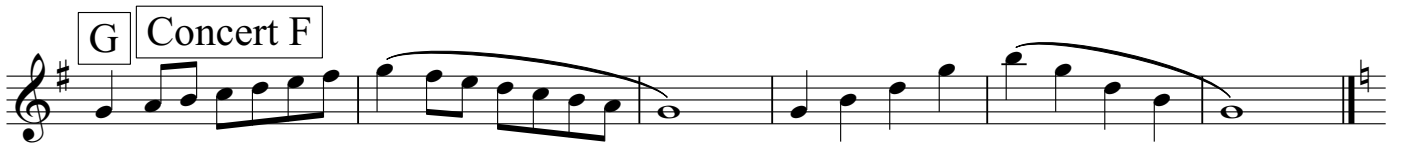


A musical staff in treble clef with a key signature of two sharps (F#, C#). The melody consists of eighth and quarter notes, starting on G4 and ending on G4. A long slur covers the final two measures.



A musical staff in treble clef with a key signature of two sharps. The melody continues from the first line, ending on a whole note G4. A long slur covers the final two measures.

G Concert F



A musical staff in treble clef with a key signature of one sharp (F#). The melody consists of eighth and quarter notes, starting on G4 and ending on G4. A long slur covers the final two measures.

Chromatic



A musical staff in treble clef with a key signature of one flat (Bb). The melody is a chromatic scale starting on G4 and ascending to G5. The notes are: G4, Ab4, Bb4, C5, D5, Eb5, F5, G5.



A musical staff in treble clef with a key signature of one flat. The melody is a chromatic scale starting on G4 and descending to G3. The notes are: G4, F4, Eb4, D4, C4, Bb3, Ab3, G3.

Trumpet

LLA Scales and Arpeggios

Wind Symphony: Play all scales and arpeggios memorized as written. Play G \flat or F \sharp .

Concert Winds: Play scales and arpeggios from C up to 4 sharps and 4 flats memorized, two octaves.

C Concert B \flat

Two staves of musical notation for the C major scale and arpeggio. The top staff shows the scale ascending and descending in 4/4 time. The bottom staff shows the arpeggio ascending and descending, starting on a whole note C.

F Concert E \flat

Two staves of musical notation for the F major scale and arpeggio. The top staff shows the scale ascending and descending in 4/4 time. The bottom staff shows the arpeggio ascending and descending, starting on a whole note F.

B \flat Concert A \flat

Two staves of musical notation for the B \flat major scale and arpeggio. The top staff shows the scale ascending and descending in 4/4 time. The bottom staff shows the arpeggio ascending and descending, starting on a whole note B \flat .

E \flat Concert D \flat

Two staves of musical notation for the E \flat major scale and arpeggio. The top staff shows the scale ascending and descending in 4/4 time. The bottom staff shows the arpeggio ascending and descending, starting on a whole note E \flat .

A \flat Concert G \flat

Two staves of musical notation for the A \flat major scale and arpeggio. The top staff shows the scale ascending and descending in 4/4 time. The bottom staff shows the arpeggio ascending and descending, starting on a whole note A \flat .

D \flat Concert C \flat



G \flat (enharmonic with F \sharp) Concert E



F \sharp (enharmonic with G \flat) Concert E



B Concert A



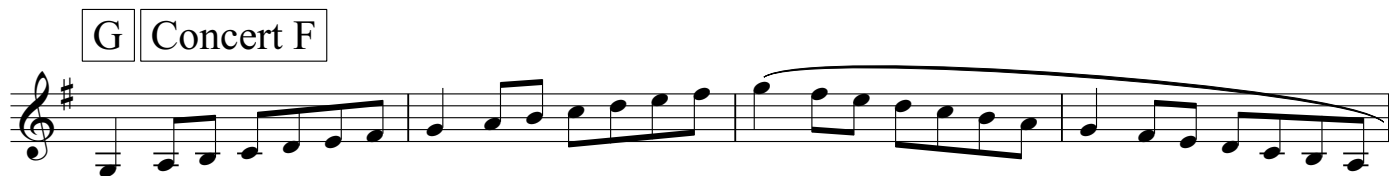
E Concert D



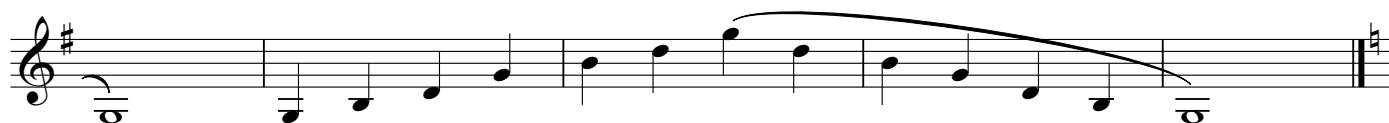
A Concert G



D Concert C



G Concert F



Chromatic



LLA Scales and Arpeggios

Wind Symphony: Play all scales and arpeggios memorized as written. Choose G \flat or F \sharp .
 Concert Winds: Play scales and arpeggios from C up to 4 sharps and 4 flats memorized,
 two octaves where possible

C Concert F

Two staves of musical notation for the C Concert F scale and arpeggio. The top staff shows the scale ascending and then descending in 4/4 time. The bottom staff shows the corresponding arpeggio, starting on a whole note C and moving through the notes of the scale in a descending pattern.

F Concert B \flat

Two staves of musical notation for the F Concert B \flat scale and arpeggio. The top staff shows the scale ascending and then descending in 4/4 time. The bottom staff shows the corresponding arpeggio, starting on a whole note F and moving through the notes of the scale in a descending pattern.

B \flat Concert E \flat

Two staves of musical notation for the B \flat Concert E \flat scale and arpeggio. The top staff shows the scale ascending and then descending in 4/4 time. The bottom staff shows the corresponding arpeggio, starting on a whole note B \flat and moving through the notes of the scale in a descending pattern.

E \flat Concert A \flat

Two staves of musical notation for the E \flat Concert A \flat scale and arpeggio. The top staff shows the scale ascending and then descending in 4/4 time. The bottom staff shows the corresponding arpeggio, starting on a whole note E \flat and moving through the notes of the scale in a descending pattern.

A \flat Concert D \flat

Two staves of musical notation in A-flat major (three flats). The first staff contains a melodic line with a long slur over the final four measures. The second staff contains a bass line with a long slur over the final four measures, ending with a double bar line.

D \flat Concert G \flat

Two staves of musical notation in D-flat major (four flats). The first staff contains a melodic line with a long slur over the final four measures. The second staff contains a bass line with a long slur over the final four measures, ending with a double bar line.

G \flat (enharmonic with F \sharp) Concert C \flat

Two staves of musical notation in G-flat major (five flats). The first staff contains a melodic line with a long slur over the final four measures. The second staff contains a bass line with a long slur over the final four measures, ending with a double bar line.

F \sharp (enharmonic with G \flat) Concert B

Two staves of musical notation in F-sharp major (six sharps). The first staff contains a melodic line with a long slur over the final four measures. The second staff contains a bass line with a long slur over the final four measures, ending with a double bar line.

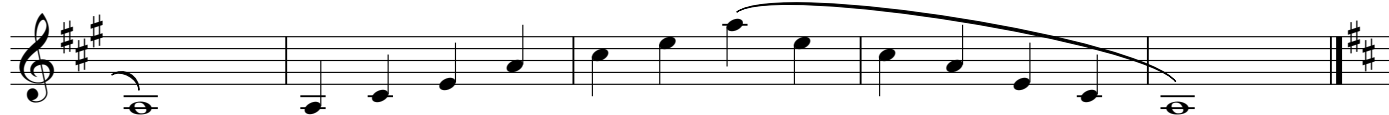
B Concert E

Two staves of musical notation in B major (two sharps). The first staff contains a melodic line with a long slur over the final four measures. The second staff contains a bass line with a long slur over the final four measures, ending with a double bar line.

E Concert G



A Concert D



D Concert G



G Concert C



Chromatic



Trombone/Euphonium

LLA Scales and Arpeggios

C

Musical notation for the C major scale and arpeggio in bass clef, 4/4 time. The scale is written in two lines: the first line contains the ascending scale (C4, D4, E4, F4, G4, A4, B4, C5) and the second line contains the descending scale (C5, B4, A4, G4, F4, E4, D4, C4). The arpeggio is written in two lines: the first line contains the ascending arpeggio (C4, E4, G4, C5) and the second line contains the descending arpeggio (C5, B4, A4, G4, F4, E4, D4, C4). The key signature is C major and the time signature is 4/4.

F

Musical notation for the F major scale and arpeggio in bass clef, 4/4 time. The scale is written in two lines: the first line contains the ascending scale (F4, G4, A4, Bb4, C5, Bb4, A4, G4, F4) and the second line contains the descending scale (F4, G4, A4, Bb4, C5, Bb4, A4, G4, F4). The arpeggio is written in two lines: the first line contains the ascending arpeggio (F4, A4, C5, F5) and the second line contains the descending arpeggio (F5, E4, D4, C4, B3, A3, G3, F3). The key signature is F major and the time signature is 4/4.

Musical notation for the F major scale and arpeggio in bass clef, 4/4 time. The scale is written in two lines: the first line contains the ascending scale (F4, G4, A4, Bb4, C5, Bb4, A4, G4, F4) and the second line contains the descending scale (F4, G4, A4, Bb4, C5, Bb4, A4, G4, F4). The arpeggio is written in two lines: the first line contains the ascending arpeggio (F4, A4, C5, F5) and the second line contains the descending arpeggio (F5, E4, D4, C4, B3, A3, G3, F3). The key signature is F major and the time signature is 4/4.

Bb

Musical notation for the Bb major scale and arpeggio in bass clef, 4/4 time. The scale is written in two lines: the first line contains the ascending scale (Bb3, C4, D4, Eb4, F4, Eb4, D4, C4, Bb3) and the second line contains the descending scale (Bb3, C4, D4, Eb4, F4, Eb4, D4, C4, Bb3). The arpeggio is written in two lines: the first line contains the ascending arpeggio (Bb3, D4, F4, Bb4) and the second line contains the descending arpeggio (Bb4, Ab3, G3, F3, Eb3, D3, C3, Bb2). The key signature is Bb major and the time signature is 4/4.

Musical notation for the Bb major scale and arpeggio in bass clef, 4/4 time. The scale is written in two lines: the first line contains the ascending scale (Bb3, C4, D4, Eb4, F4, Eb4, D4, C4, Bb3) and the second line contains the descending scale (Bb3, C4, D4, Eb4, F4, Eb4, D4, C4, Bb3). The arpeggio is written in two lines: the first line contains the ascending arpeggio (Bb3, D4, F4, Bb4) and the second line contains the descending arpeggio (Bb4, Ab3, G3, F3, Eb3, D3, C3, Bb2). The key signature is Bb major and the time signature is 4/4.

Eb

Musical notation for the Eb major scale and arpeggio in bass clef, 4/4 time. The scale is written in two lines: the first line contains the ascending scale (Eb3, F3, G3, Ab3, Bb3, Ab3, G3, F3, Eb3) and the second line contains the descending scale (Eb3, F3, G3, Ab3, Bb3, Ab3, G3, F3, Eb3). The arpeggio is written in two lines: the first line contains the ascending arpeggio (Eb3, G3, Bb3, Eb4) and the second line contains the descending arpeggio (Eb4, D3, C3, Bb2, Ab2, G2, F2, Eb2). The key signature is Eb major and the time signature is 4/4.

A \flat

Two staves of musical notation for the A \flat major scale in bass clef. The first staff shows the ascending scale with a slur over the final six notes. The second staff shows the descending scale with a slur over the final six notes. The key signature has three flats.

D \flat

Two staves of musical notation for the D \flat major scale in bass clef. The first staff shows the ascending scale with a slur over the final six notes. The second staff shows the descending scale with a slur over the final six notes. The key signature has four flats.

G \flat (enharmonic with F \sharp)

Two staves of musical notation for the G \flat major scale in bass clef. The first staff shows the ascending scale with a slur over the final six notes. The second staff shows the descending scale with a slur over the final six notes. The key signature has four flats.

F \sharp (enharmonic with G \flat)

Two staves of musical notation for the F \sharp major scale in bass clef. The first staff shows the ascending scale with a slur over the final six notes. The second staff shows the descending scale with a slur over the final six notes. The key signature has three sharps.

B

Two staves of musical notation for the B major scale in bass clef. The first staff shows the ascending scale with a slur over the final six notes. The second staff shows the descending scale with a slur over the final six notes. The key signature has two sharps.

E

A

D

G

Chromatic

Tuba

LLA Scales and Arpeggios

C

Musical notation for the C major scale and arpeggio in bass clef, 4/4 time. The scale is written in eighth notes, and the arpeggio is written in quarter notes. The key signature has one flat (Bb), and the time signature is 4/4.

F

Musical notation for the F major scale and arpeggio in bass clef, 4/4 time. The scale is written in eighth notes, and the arpeggio is written in quarter notes. The key signature has two flats (Bb, Eb), and the time signature is 4/4.

Musical notation for the Bb major scale and arpeggio in bass clef, 4/4 time. The scale is written in eighth notes, and the arpeggio is written in quarter notes. The key signature has two flats (Bb, Eb), and the time signature is 4/4.

Bb

Musical notation for the Bb major scale and arpeggio in bass clef, 4/4 time. The scale is written in eighth notes, and the arpeggio is written in quarter notes. The key signature has two flats (Bb, Eb), and the time signature is 4/4.

Musical notation for the Eb major scale and arpeggio in bass clef, 4/4 time. The scale is written in eighth notes, and the arpeggio is written in quarter notes. The key signature has three flats (Bb, Eb, Ab), and the time signature is 4/4.

Eb

Musical notation for the Eb major scale and arpeggio in bass clef, 4/4 time. The scale is written in eighth notes, and the arpeggio is written in quarter notes. The key signature has three flats (Bb, Eb, Ab), and the time signature is 4/4.

Ab

Two staves of musical notation in bass clef, key signature of three flats (B-flat major/C minor). The first staff contains a melodic line with eighth and sixteenth notes, starting on G3 and ending on G3. The second staff contains a bass line with whole notes, starting on G2 and ending on G2. A double bar line is at the end of the second staff.

Db

Two staves of musical notation in bass clef, key signature of three flats (B-flat major/C minor). The first staff contains a melodic line with eighth and sixteenth notes, starting on G3 and ending on G3. The second staff contains a bass line with whole notes, starting on G2 and ending on G2. A double bar line is at the end of the second staff.

Gb (enharmonic with F#)

Two staves of musical notation in bass clef, key signature of three flats (B-flat major/C minor). The first staff contains a melodic line with eighth and sixteenth notes, starting on G3 and ending on G3. The second staff contains a bass line with whole notes, starting on G2 and ending on G2. A double bar line is at the end of the second staff.

F# (enharmonic with Gb)

Two staves of musical notation in bass clef, key signature of three sharps (F major/C minor). The first staff contains a melodic line with eighth and sixteenth notes, starting on G3 and ending on G3. The second staff contains a bass line with whole notes, starting on G2 and ending on G2. A double bar line is at the end of the second staff.

B

Two staves of musical notation in bass clef, key signature of three sharps (F major/C minor). The first staff contains a melodic line with eighth and sixteenth notes, starting on G3 and ending on G3. The second staff contains a bass line with whole notes, starting on G2 and ending on G2. A double bar line is at the end of the second staff.

E

Exercise E: Two staves of music in bass clef, key signature of three sharps (F#, C#, G#). The first staff features a melodic line with eighth and sixteenth notes, and the second staff features a bass line with eighth notes and rests.

A

Exercise A: Two staves of music in bass clef, key signature of three sharps (F#, C#, G#). The first staff features a melodic line with eighth and sixteenth notes, and the second staff features a bass line with eighth notes and rests.

D

Exercise D: Two staves of music in bass clef, key signature of two sharps (F#, C#). The first staff features a melodic line with eighth and sixteenth notes, and the second staff features a bass line with eighth notes and rests.

G

Exercise G: Two staves of music in bass clef, key signature of one sharp (F#). The first staff features a melodic line with eighth and sixteenth notes, and the second staff features a bass line with eighth notes and rests.

Chromatic

Chromatic exercise: Two staves of music in bass clef. The first staff shows a chromatic scale in the key of E major (E, F#, G, A, B, C#, D, E), and the second staff shows a chromatic scale in the key of E minor (E, F, G, A, B, C, D, E).

Mallets

LLA Scales and Arpeggios

Wind Symphony: Play all scales and arpeggios memorized as written. Choose G \flat or F \sharp .

Concert Winds: Play scales and arpeggios from C up to 4 sharps and 4 flats memorized.

Mallets play all scales and arpeggios three octaves, like C major.

C

The C major scale is written on a treble clef staff in 4/4 time. It consists of three octaves of ascending and descending eighth notes. The notes are C, D, E, F, G, A, B, C, B, A, G, F, E, D, C.

F 3 octaves

The F major scale is written on a treble clef staff in 4/4 time. It consists of three octaves of ascending and descending eighth notes. The notes are F, G, A, Bb, C, D, E, F, E, D, C, Bb, A, G, F.

B \flat 3 octaves

The B \flat major scale is written on a treble clef staff in 4/4 time. It consists of three octaves of ascending and descending eighth notes. The notes are B \flat , C, D, E, F, G, A, B \flat , A, G, F, E, D, C, B \flat .

E \flat 2 octaves

The E \flat major scale is written on a treble clef staff in 4/4 time. It consists of two octaves of ascending and descending eighth notes. The notes are E \flat , F, G, A, B \flat , C, D, E \flat , D, C, B \flat , A, G, F, E \flat .

A \flat 3 octaves

The A \flat major scale is written on a treble clef staff in 4/4 time. It consists of three octaves of ascending and descending eighth notes. The notes are A \flat , B \flat , C, D, E, F, G, A \flat , G, F, E, D, C, B \flat , A \flat .

D \flat 2 octaves

The D \flat major scale is written on a treble clef staff in 4/4 time. It consists of two octaves of ascending and descending eighth notes. The notes are D \flat , E \flat , F, G, A, B \flat , C, D \flat , C, B \flat , A, G, F, E \flat , D \flat .

G \flat (enharmonic with F \sharp) 3 octaves

The G \flat major scale is written on a treble clef staff in 4/4 time. It consists of three octaves of ascending and descending eighth notes. The notes are G \flat , A \flat , B \flat , C, D, E, F, G \flat , F, E, D, C, B \flat , A \flat , G \flat .

F# (enharmonic with Gb) 3 octaves